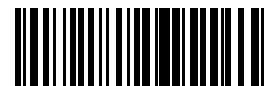




ANALIZA BIAŁEK



100004130

## Laboratory of Analysis

**Client:** ep-company  
**Order number:** 100004130  
**Name:** EURO-PHARMACIES TRT PLUS  
**Number of samples:** 1 vial

**Batch number:** EP-4221C1  
**Recive date:** 2023-09-19  
**Start date:** 2023-10-02  
**End date:** 2023-10-03

## Sample identification

| Substance                                      | Method of taking a sample   | Form                               |
|--|-----------------------------|------------------------------------|
| Testosterone Enanthate<br>Drostolone Enanthate | Sample provided by customer | Transparent liquid in a glass vial |

## Results

| Substance              | Sample name                          | Content     | Purity |
|------------------------|--------------------------------------|-------------|--------|
| Testosterone Enanthate | EURO-PHARMACIES TRT PLUS<br>400MG/ML | 193,81mg/ml | -----  |
| Drostanolone Enanthate | EURO-PHARMACIES TRT PLUS<br>400MG/ML | 204,13mg/ml | -----  |

## Research comment

The test sample was applied in the amount of 3 $\mu$ l and 20 $\mu$ l to the BioBasic 8 Thermo Scientific column. During the analysis with the method a linear gradient in the solutions of H<sub>2</sub>O and Acetonitrile with the addition of 0.1% trifluoroacetic acid, a peaks of the sought substances appeared. Its concentration, when compared to the reference chromatogram shows the table above. The measurement error is + - 1mg. The actual state of the sample sent before the test is presented on the photo below

## Photo of the test sample



## Password

K36DNS92

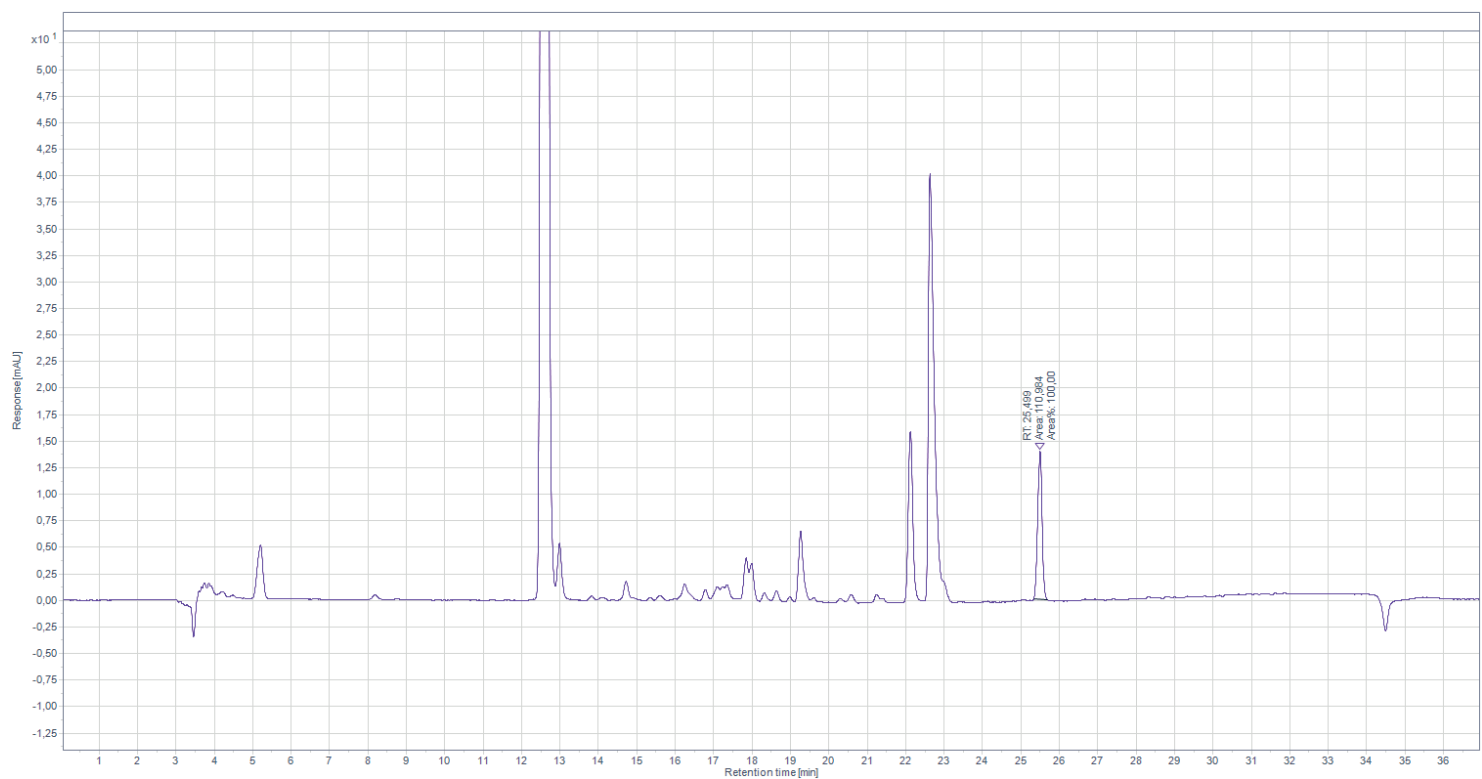
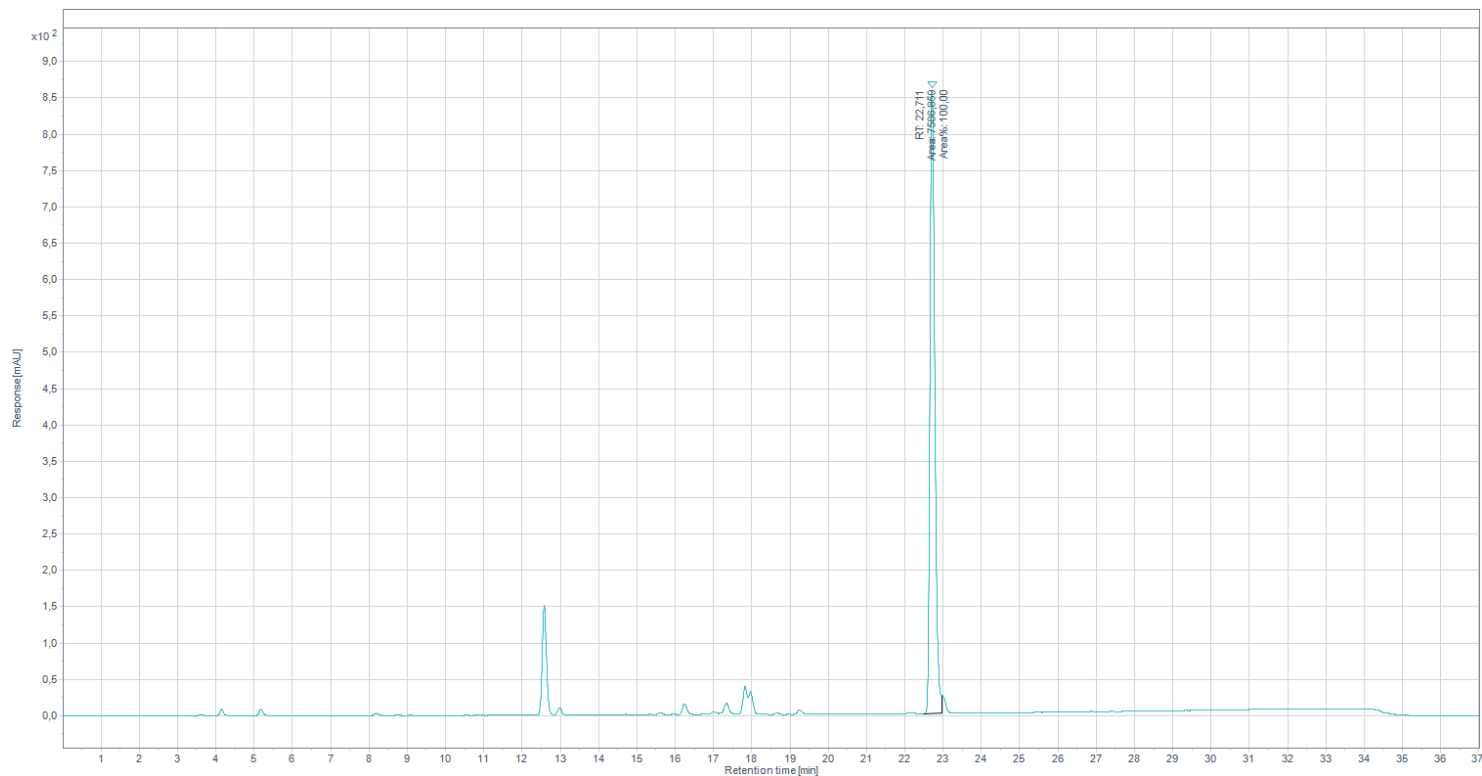
**Analiza Białek sp. z o.o.**  
**KRS:** 0000966168  
**NIP:** 8992922970  
**REGON:** 521751875

**Headquarters and Laboratory:**  
ul. Duńska 9, 54-427 Wrocław  
Budynek DELTA

**Lab technician:**  
Analysis and research specialist  
mgr Arkadiusz Zajęc

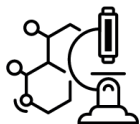


## Chromatogram



### Password

K36DNS92



## Method

| Time  | H2O + 0,1% TFA | ACN + 0,1% TFA |
|-------|----------------|----------------|
| 0min  | 60%            | 40%            |
| 2min  | 60%            | 40%            |
| 27min | 5%             | 95%            |
| 30min | 5%             | 95%            |

### Password

K36DNS92